

Display for 3-in-1 Weather Sensor model 06019RM



Package Contents

1. Display unit with tabletop stand
2. Power adapter
3. Instruction Manual

This product requires an AcuRite 3-in-1 Weather Sensor (model 06008RM; sold separately) to be operational.

IMPORTANT

PRODUCT MUST BE REGISTERED TO RECEIVE WARRANTY SERVICE

PRODUCT REGISTRATION

Register online
to receive 1 year
warranty protection
www.AcuRite.com

SUPPORT

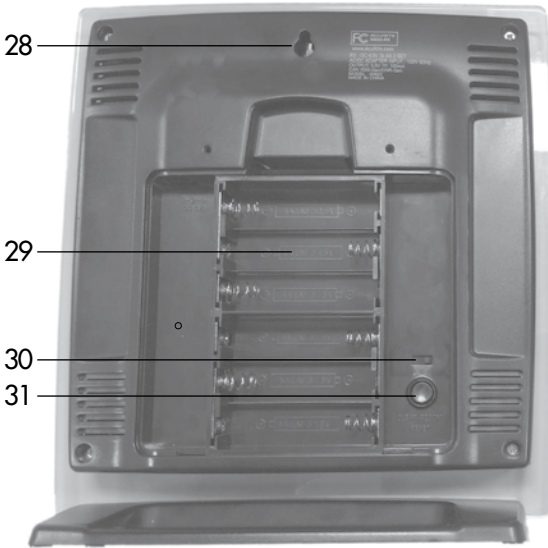
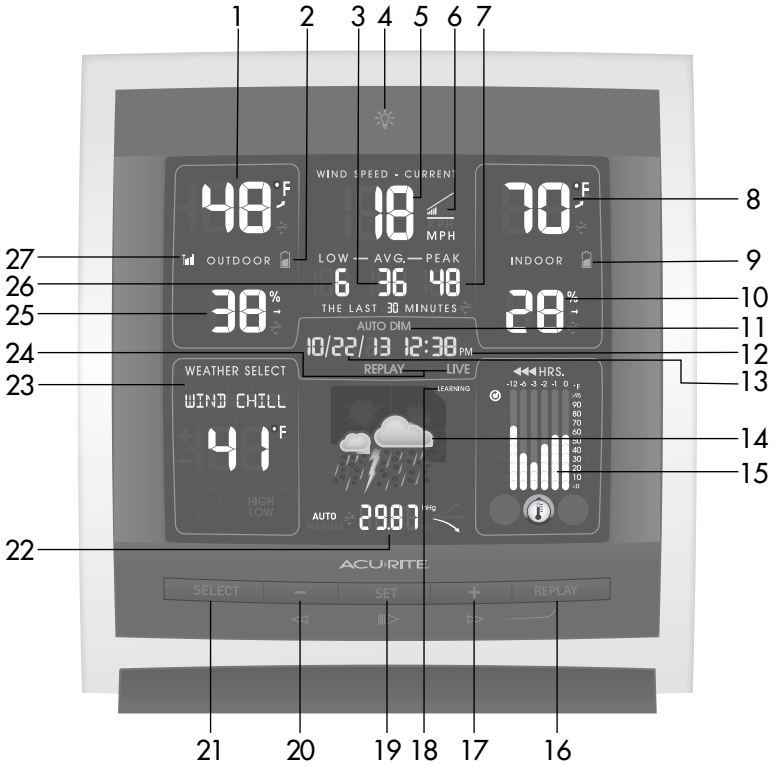
- Support Forum
- Archived Products
- ▶ Register a Product

Questions? Contact Customer Support at (877) 221-1252 or visit www.AcuRite.com.

SAVE THIS MANUAL FOR FUTURE REFERENCE.

Features & Benefits

Display Unit



DISPLAY UNIT

- 1. Current Outdoor Temperature**
Arrow icon indicates direction temperature is trending.
- 2. Sensor Low Battery Indicator**
- 3. Average Wind Speed**
Average of all speeds over last 30 minutes or calibrated 30 minute interval.
- 4. Backlight Button**
- 5. Current Wind Speed**
- 6. Wind Gust Icon**
- 7. Peak Wind Speed**
Highest speed from last 30 minutes or calibrated 30 minute interval.
- 8. Current Indoor Temperature**
Arrow icon indicates direction temperature is trending.
- 9. Display Low Battery Indicator**
- 10. Current Indoor Humidity**
Arrow icon indicates direction humidity is trending.
- 11. AUTO DIM Indicator**
- 12. Clock**
- 13. Date**
- 14. 12 to 24 Hour Weather Forecast**
Self-Calibrating Forecasting pulls data from the outdoor sensor to generate your personal forecast.
- 15. Multi-Variable History Chart**
Displays the past 12 hours of data for pressure, temperature and humidity.
- 16. REPLAY Button**
For displaying historical data.
- 17. + Button**
For setup preferences.
- 18. Learning Mode Icon**
Disappears after weather forecast self-calibration is complete.

- 19. SET Button**
For setup preferences.
- 20. – Button**
For setup preferences.
- 21. SELECT Button**
Press to change the Weather Select (#23) category being displayed.
- 22. Barometric Pressure**
Arrow icon indicates direction pressure is trending.
- 23. Weather Select**
Displays heat index, dew point or wind chill, daily, monthly, all time high & low records indoor/outdoor temperatures and humidity and high for wind speed.
- 24. REPLAY and LIVE Icons**
REPLAY indicates historical data is being displayed. LIVE icon is shown while exiting REPLAY function.
- 25. Current Outdoor Temperature**
Arrow icon indicates direction temperature is trending.
- 26. Low Wind Speed**
Lowest speed from past 30 minutes or calibrated 30 minute interval.
- 27. Outdoor Sensor Signal Strength**

BACK OF DISPLAY UNIT

- 28. Integrated Hang Hole**
For easy wall mounting
- 29. Battery Compartment**
- 30. A-B-C Switch**
ID code that must match sensor's A-B-C switch to ensure units synchronize.
- 31. CLEAR RECORD/RESET Button**
Press to clear record currently being viewed. Press and HOLD for full reset to factory defaults.
- 32. Battery Compartment Cover**
- 33. Power adapter**

Display Unit Setup

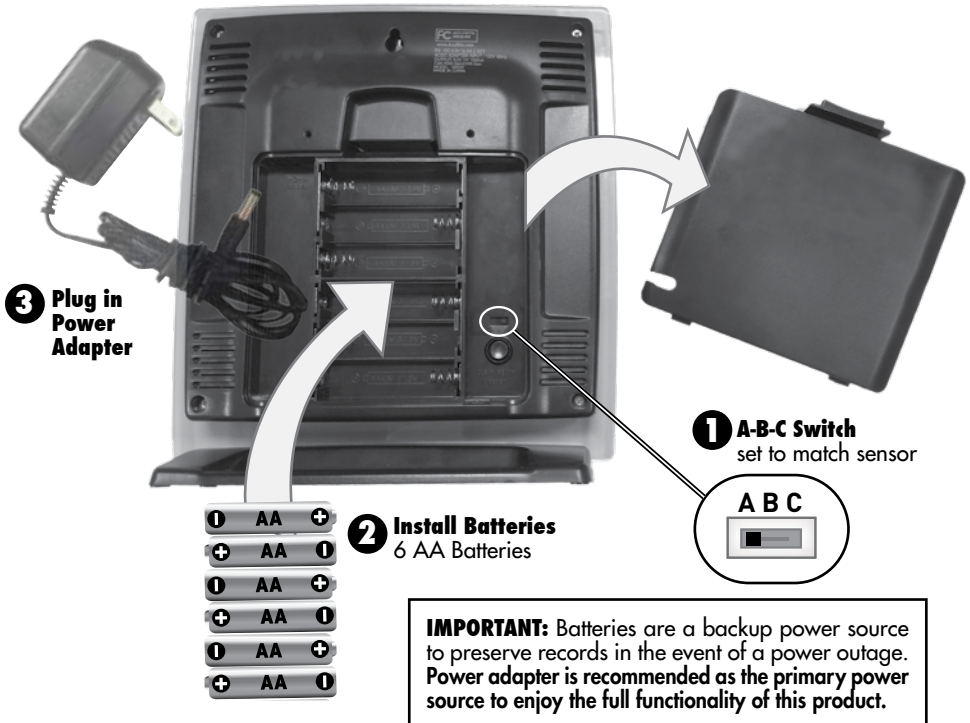
1 Set the A-B-C Switch

Locate the A-B-C switch inside the battery compartment. Set the A-B-C switch to A, B or C. You must select the same letter choices for both the display unit and the sensor in order for the units to synchronize.

2 Install or Replace Batteries

1. Remove the battery compartment cover.
2. Insert 6 x AA alkaline batteries into the battery compartment, as shown. Follow the polarity (+/-) diagram in the battery compartment.
3. Replace the battery cover.

3 Plug Power Adapter into Electric Outlet



PLEASE DISPOSE OF OLD OR DEFECTIVE BATTERIES IN AN ENVIRONMENTALLY SAFE WAY AND IN ACCORDANCE WITH YOUR LOCAL LAWS AND REGULATIONS.

BATTERY SAFETY: Clean the battery contacts and also those of the device prior to battery installation. Remove batteries from equipment which is not to be used for an extended period of time. Follow the polarity (+/-) diagram in the battery compartment. Promptly remove dead batteries from the device. Dispose of used batteries properly. Only batteries of the same or equivalent type as recommended are to be used. DO NOT incinerate used batteries. DO NOT dispose of batteries in fire, as batteries may explode or leak. DO NOT mix old and new batteries or types of batteries (alkaline/standard). DO NOT use rechargeable batteries. DO NOT recharge non-rechargeable batteries. DO NOT short-circuit the supply terminals.

Set the Time, Date & Units

Press the "SET" button, located on the front of the display unit, to enter SET MODE. Once in set mode, the preference you are currently setting will blink on the display.

To adjust the currently selected (flashing) item, press and release the "+" or "-" buttons (press and HOLD to fast adjust).

To save your adjustments, press and release the "SET" button again to adjust the next preference. The preference set order is as follows:

CLOCK HOUR

CLOCK MINUTE

CALENDAR MONTH

CALENDAR DATE

CALENDAR YEAR

TEMPERATURE UNITS (°F or °C)

WIND UNITS (MPH or KM/H)

PRESSURE UNITS (inHg or hPa)

You will automatically exit SET MODE if no buttons are pressed for 10 seconds. Enter setup mode at any time by pressing the "SET" button.

Display Backlight Settings

This weather station's color display features three different lighting settings: High (100%) brightness, Medium (60%) brightness and Low (30%) brightness

Using battery power alone, the backlight is available momentarily for 10 seconds by pressing the "💡" button.

When display is powered with the power adapter, backlight remains on at 100% brightness. Press "💡" button once to dim to 60% brightness; press again to dim to 30%, press a 3rd time to enter "AUTO DIM" mode. AUTO DIM appears above time and date.

AUTO DIM MODE: Automatically adjusts display brightness based on time of day & year.	
MARCH 11- NOVEMBER 4	6:00 a.m. - 9:00 p.m. = 100% brightness
	9:01 p.m. - 5:59 a.m.= 30% brightness
NOVEMBER 5 - MARCH 10	7:30 a.m. - 7:00 p.m.= 100% brightness
	7:01 p.m. - 7:29 a.m. = 30% brightness

Placement for Maximum Accuracy

AcuRite sensors are sensitive to surrounding environmental conditions. Proper placement of both the display unit and the sensor are critical to the accuracy and performance of this product.



Display Unit Placement

Place the display unit in a dry area free of dirt and dust. To ensure accurate temperature measurement, place out of direct sunlight and away from heat sources or vents. Display unit stands upright for tabletop use or is wall-mountable

Important Placement Guidelines

Display unit and sensor must be within 330 feet (100 m) of each other.

MAXIMIZE WIRELESS RANGE

Place units away from large metallic items, thick walls, metal surfaces, or other objects that may limit wireless communication.

PREVENT WIRELESS INTERFERENCE

Place both units at least 3 feet (.9 m) away from electronic devices (TV, computer, microwave, radio, etc.).

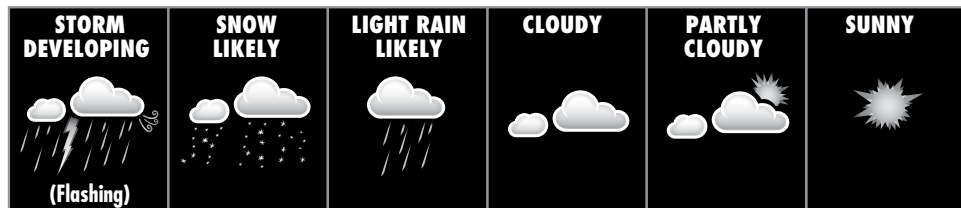
Using The Weather Center

Learning Mode

Self-Calibrating Forecasting use a unique algorithm to analyze changes in pressure over a time period (called Learning Mode) to determine your altitude. After 14 days, the Learning Mode icon disappears from the display screen. At this point, the self-calibrated pressure is tuned in to your location and the unit is ready for superior weather prediction.

Weather Forecast

AcuRite's patented Self-Calibrating Forecasting provides your personal forecast of weather conditions for the next 12 to 24 hours by collecting data from the sensor in your backyard. It generates a forecast with pinpoint accuracy - personalized for your exact location.



View the complete list of icons at www.AcuRite.com/acurite-icons

Multi-Variable History Chart

The multi-variable history chart lets you monitor the change in conditions over the past 12 hour time period (-12, -6, -3, -2, -1, 0). The chart automatically toggles between barometric pressure, outdoor temperature and outdoor humidity readings.

Wind Speed

The Wind Speed area of the display features the CURRENT speed, as well as the LOW, AVERAGE and PEAK wind speeds. PEAK, AVERAGE and LOW wind speeds are based on the past 30 minute time frame by default. The time frame can be adjusted during the calibration process (page 15).

Barometric Pressure

Subtle variations in barometric pressure greatly impact the weather. This weather center displays the current pressure with an arrow icon to indicate the direction the pressure is trending (FALLING, STEADY, or RISING). The multi-variable history chart lets you monitor the change in pressure over time.

Weather Select

Weather Select displays data including wind chill, dew point, heat index, as well as 24 hour change, and high/low records for outdoor/indoor temperatures, humidity and wind speed. To change the "Weather Select" category shown, press the "SELECT" button on the front of the display. When outdoor/indoor temperature or humidity is chosen, the display cycles through the category's records in this order:

24 Hour Change (amount the data has changed since 24 hours ago)

Today's HIGH

Today's LOW

Month's HIGH

Month's LOW

All Time HIGH

All Time LOW

When Wind Speed is chosen, the display cycles through the following records:

Today's HIGH

Month's HIGH

All Time HIGH

To clear a record, view one of the values listed above and press the "CLEAR RECORD/RESET" button, located on the back of the unit in the battery compartment. Dashes display to confirm the record has been cleared.

REPLAY Historical Data

This weather station stores historical data that can be viewed in Replay Mode. Data is recorded for the past 48 hours in 30 minute intervals (on the hour and half hour). Historical data is shown with a time and date stamp.

Press the "REPLAY" button to enter Replay Mode. The REPLAY icon and options will be shown on the display below the time.

REPLAY MODE OPTIONS:

- Press the "SET" (00▷) button to view 48-hour historical data. First, data is shown that was recorded 48 hours ago, and then the display cycles through the historical data in 30 minute intervals up to the current time. To exit Replay Mode and view live data, press the "REPLAY" button
- Press the "-" (<◀) button to view historical data in 30 minute intervals previous to the current "LIVE" data.
- While viewing historical data, press the "+" (▶) button to advance the data shown by a 30 minute interval.

You will automatically exit Replay Mode if no buttons are pressed for 10 seconds. To manually exit Replay Mode at any time, press the "REPLAY" button. The display may show or flash the "LIVE" icon to confirm you are exiting Replay Mode and returning to the current ("LIVE") data view.

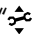
Care & Maintenance

Display Unit Care

Clean with a soft, damp cloth. Do not use caustic cleaners or abrasives. Keep away from dust, dirt and moisture. Clean ventilation ports regularly with a gentle puff of air.

Calibration

The indoor / outdoor temperature and humidity readings, wind speed interval, and barometric pressure can be calibrated on the display unit to improve accuracy. Calibration can improve accuracy when sensor placement or environmental factors impact the data accuracy.

1. To access calibration mode, press AND HOLD the “-”, “SET” and “+” buttons simultaneously for at least 5 seconds.
2. To adjust the currently selected (flashing) item, press and release the “-” or “+” buttons to calibrate the data value higher or lower from the actual reading.
3. To save your adjustments, press and release the “SET” button to adjust the next preference. The “” icon will remain illuminated next to calibrated values.

The preference set order is as follows:

OUTDOOR TEMPERATURE

OUTDOOR HUMIDITY

INDOOR TEMPERATURE

INDOOR HUMIDITY

WIND SPEED INTERVAL (30, 60, 90, 120, 150 or 180 minutes)

BAROMETRIC PRESSURE (must be set to MANUAL mode to calibrate)*

*To change from AUTO to MANUAL pressure mode and vice versa, press AND HOLD the “SET” button for at least 10 seconds. The display indicates the current pressure mode selected, “AUTO” or “MANUAL”. After 10 seconds of inactivity, the display will save the adjustments and exit calibration mode. Note: Calibration preferences will be erased if the display is reset or if batteries are removed and the power adapter is unplugged.

Specifications

TEMPERATURE RANGE	Outdoor: -40°F to 158°F; -40°C to 70°C
	Indoor: 32°F to 122°F; 0°C to 50°C
HUMIDITY RANGE	Outdoor: 1% to 99%
	Indoor: 1% to 99%
WIND SPEED	0 to 99 mph; 0 to 159 kph
WIRELESS RANGE	330 ft / 100 m depending on home construction materials
OPERATING FREQUENCY	433 mhz
POWER	Display: 5V DC, 100mA power adapter 6 x AA alkaline batteries Sensor: 4 x AA alkaline or lithium batteries
DATA REPORTING	Wind Speed: 18 second updates
	Outdoor temperature & humidity: 18 second updates
	Indoor temperature & humidity: 60 second updates

**If your AcuRite product does not operate properly,
visit www.AcuRite.com or call (877) 221-1252 for assistance.
For more information, visit our Knowledge Base at <http://www.AcuRite.com/kbase>**

FCC Information

This device complies with part 15 of FCC rules. Operation is subject to the following two conditions:

- 1- This device may NOT cause harmful interference, and
- 2- This device must accept any interference received, including interference that may cause undesired operation.

WARNING: Changes or modifications to this unit not expressly approved by the party responsible for compliance could void the user's authority to operate the equipment.

NOTE: This equipment has been tested and found to comply with the limits for a Class B digital device, pursuant to Part 15 of the FCC rules. These limits are designed to provide reasonable protection against harmful interference in a residential installation. This equipment generates, uses and can radiate radio frequency energy and, if not installed and used in accordance with the instructions, may cause harmful interference to radio communications.

However, there is no guarantee that interference will not occur in a particular installation. If this equipment does cause harmful interference to radio or television reception, which can be determined by turning the equipment off and on, the user is encouraged to try to correct the interference by one or more of the following measures:

- Reorient or relocate the receiving antenna.
- Increase the separation between the equipment and the receiver.
- Connect the equipment into an outlet on a circuit different from that to which the receiver is connected.
- Consult the dealer or an experienced radio/TV technician for help.

NOTE: The manufacturer is not responsible for any radio or TV interference caused by unauthorized modifications to this equipment. Such modifications could void the user authority to operate the equipment.

This device complies with Industry Canada licence-exempt RSS standard(s).

Operation is subject to the following two conditions:

- (1) This device may not cause interference, and
- (2) This device must accept any interference received, including interference that may cause undesired operation of the device.

Customer Support

AcuRite customer support is committed to providing you with best-in-class service. **For assistance**, please have the model number of this product available and contact us in any of the following ways:



(877) 221-1252



info@chaney-inst.com

24/7 support at www.AcuRite.com

- ▶ Installation Videos
- ▶ Register your Product
- ▶ Instruction Manuals
- ▶ Support User Forum
- ▶ Replacement Parts
- ▶ Submit Feedback & Ideas

IMPORTANT

PRODUCT MUST BE REGISTERED
TO RECEIVE WARRANTY SERVICE

PRODUCT REGISTRATION

Register online
to receive 1 year
warranty protection

www.AcuRite.com

FOR NOW

SUPPORT

Support Forum

Archived Products

▶ Register a Product

At AcuRite, we proudly uphold our commitment to quality technology. Chaney Instrument Co. warrants that all products it manufactures to be of good material and workmanship, and to be free of defects when properly installed and operated for a period of one year from the date of purchase.

We recommend that you visit us at www.AcuRite.com for the fastest way to register your product. However, product registration does not eliminate the need to retain your original proof of purchase in order to obtain warranty benefits.

Chaney Instrument Co. warrants that all products it manufactures to be of good material and workmanship, and to be free of defects when properly installed and operated for a period of one year from the date of purchase. Remedy for breach of this warranty is limited to repair or replacement of the defective item(s). Any product which, under normal use and service, is proven to breach the warranty contained herein within ONE YEAR from date of sale will, upon examination by Chaney, and at its sole option, be repaired or replaced by Chaney. Transportation costs and charges for returned goods shall be paid for by the purchaser. Chaney hereby disclaims all responsibility for such transportation costs and charges. This warranty will not be breached, and Chaney will give no credit for products

it manufactures which have received normal wear and tear, been damaged (including by acts of nature), tampered, abused, improperly installed, damaged in shipping, or repaired or altered by others than authorized representatives of Chaney.

The above-described warranty is expressly in lieu of all other warranties, express or implied, and all other warranties are hereby expressly disclaimed, including without limitation the implied warranty of merchantability and the implied warranty of fitness for a particular purpose. Chaney expressly disclaims all liability for special, consequential or incidental damages, whether arising in tort or by contract from any breach of this warranty. Some states do not allow the exclusion or limitation of incidental or consequential damages, so the above limitation or exclusion may not apply to you. Chaney further disclaims all liability from personal injury relating to its products to the extent permitted by law. By acceptance of any of Chaney's products, the purchaser assumes all liability for the consequences arising from their use or misuse. No person, firm or corporation is authorized to assume for Chaney any other liability in connection with the sale of its products. Furthermore, no person, firm or corporation is authorized to modify or waive the terms of this paragraph, and the preceding paragraph, unless done in writing and signed by a duly authorized agent of Chaney. This warranty gives you specific legal rights, and you may also have other rights which vary from state to state.

For in-warranty claims:
Chaney Instrument Co. | 965 Wells St. | Lake Geneva, WI 53147

ACU>RITE®



Weather
Stations



Temperature
& Humidity



Weather
Alert Radio



Kitchen
Thermometers
& Timers



Clocks

It's More than Accurate, it's ACU>RITE.

AcuRite offers an extensive assortment of precision instruments,
designed to provide you with information you can depend on to
Plan your day with confidence™.

www.AcuRite.com