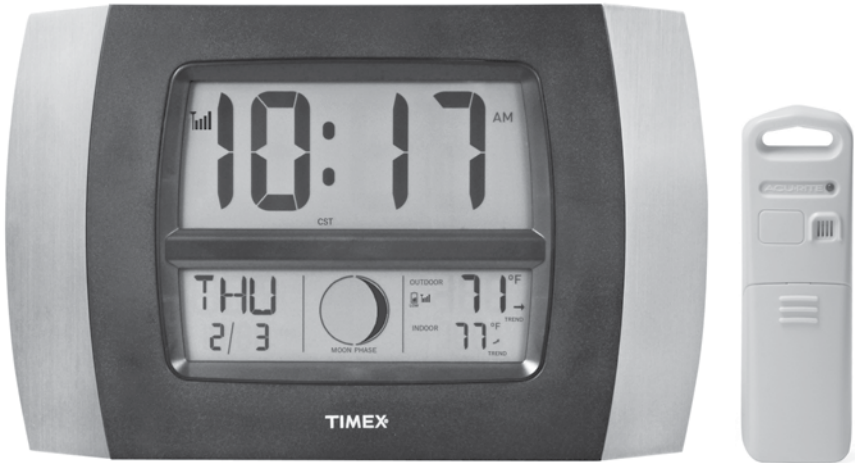


Atomic Digital Clock models 75331 / 75333



CONTENTS

Unpacking Instructions	2	Placement Guidelines	6
Package Contents	2	Using the Clock.....	7
Product Registration	2	Backlight Settings.....	7
Features & Benefits: Sensor.....	2	Troubleshooting	8
Features & Benefits: Clock	3	Care & Maintenance.....	9
Setup	4	Replace Intelli-Time® Battery....	9
Outdoor Sensor Setup.....	4	Specifications.....	10
Clock Setup.....	4	FCC Information	10
Atomic Clock.....	5	Customer Support	11
Set the Time, Date & Units	5	Warranty.....	11

Questions? Contact Customer Support at (877) 221-1252 or visit www.AcuRite.com.

SAVE THIS MANUAL FOR FUTURE REFERENCE.

ACURITE®

Congratulations on your new AcuRite product. To ensure the best possible product performance, please read this manual in its entirety and retain it for future reference.

Unpacking Instructions

Remove the protective film that is applied to the LCD screen prior to using this product. Locate the tab and peel off to remove.

Package Contents

1. Digital Clock
2. Outdoor Sensor
3. Instruction Manual

IMPORTANT

PRODUCT MUST BE REGISTERED
TO RECEIVE WARRANTY SERVICE

PRODUCT REGISTRATION

Register online
to receive 1 year
warranty protection

www.AcuRite.com

SHOP NOW

SUPPORT

Support Forum

Archived Products

▶ Register a Product

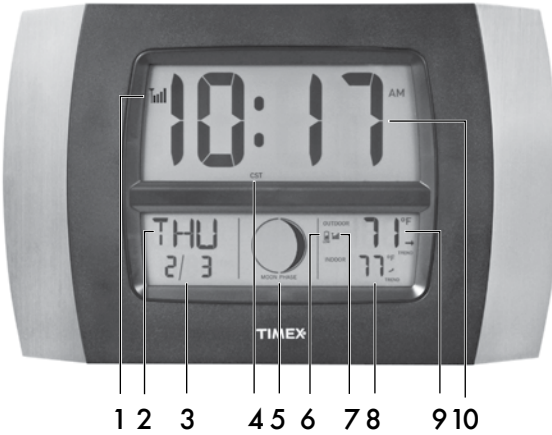
Features & Benefits



OUTDOOR SENSOR

- 1. Integrated Hanger**
For easy placement.
- 2. Wireless Signal Indicator**
Flashes when data is being sent to the clock.
- 3. Battery Compartment**
- 4. Battery Compartment Cover**

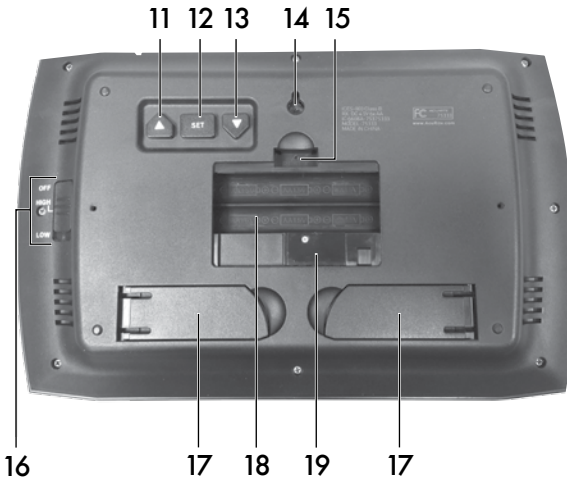
Features & Benefits



FRONT OF CLOCK

- 1. Atomic Clock Signal Strength**
- 2. Day of the Week**
- 3. Date**
- 4. Time Zone Indicator**
- 5. Moon Phase**
- 6. Sensor Low Battery Indicator**
- 7. Outdoor Sensor Signal Strength**
- 8. Current Indoor Temperature**
Arrow icon indicates the direction the temperature is trending.
- 9. Current Outdoor Temperature**
Arrow icon indicates the direction the temperature is trending.
- 10. Atomic Clock**
Sets itself to the correct time and automatically updates for Daylight Saving Time.

BACK OF CLOCK



- 11. "▲" Button**
For setup preferences.
- 12. "SET" Button**
For setup preferences.
- 13. "▼" Button**
For setup preferences.
- 14. Integrated Hang Hole**
For easy wall mounting.
- 15. RESET Button**
Full reset to factory defaults.
- 16. Backlight OFF/HIGH/LOW Switch**
- 17. Fold-Out Stands**
For tabletop placement.
- 18. Battery Compartment**
- 19. Intelli-Time® Battery Compartment**
- 20. Battery Compartment Cover**
(not shown)

Install or Replace Batteries

AcuRite recommends high quality alkaline batteries for the best product performance. Heavy duty or rechargeable batteries are not recommended.

The outdoor sensor requires lithium batteries in low temperature conditions. Cold temperatures can cause alkaline batteries to function improperly. Use lithium batteries in the outdoor sensor for temperatures below -4°F / -20°C .

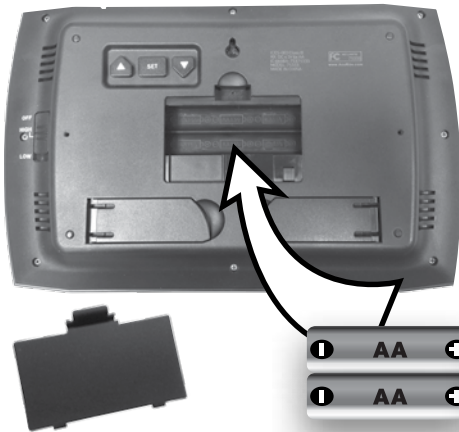


Outdoor Sensor

1. Slide off the battery compartment cover.
2. Insert 2 x AA batteries into the battery compartment, as shown. Follow the polarity (+/-) diagram in the battery compartment.
3. Replace the battery cover.

LITHIUM BATTERIES **-40°F** (-40°C) **158°F** (70°C)

ALKALINE BATTERIES **-4°F** (-20°C) **158°F** (70°C)



Clock

1. Slide off the battery compartment cover.
2. Insert 6 x AA batteries into the battery compartment, as shown. Follow the polarity (+/-) diagram in the battery compartment.
3. Replace the battery cover.



PLEASE DISPOSE OF OLD OR DEFECTIVE BATTERIES IN AN ENVIRONMENTALLY SAFE WAY AND IN ACCORDANCE WITH YOUR LOCAL LAWS AND REGULATIONS.

BATTERY SAFETY: Clean the battery contacts and also those of the device prior to battery installation. Remove batteries from equipment which is not to be used for an extended period of time. Follow the polarity (+/-) diagram in the battery compartment. Promptly remove dead batteries from the device. Dispose of used batteries properly. Only batteries of the same or equivalent type as recommended are to be used. DO NOT incinerate used batteries. DO NOT dispose of batteries in fire, as batteries may explode or leak. DO NOT mix old and new batteries or types of batteries (alkaline/standard). DO NOT use rechargeable batteries. DO NOT recharge non-rechargeable batteries. DO NOT short-circuit the supply terminals.

Atomic Clock (RCC)

AcuRite atomic clocks use a radio-controlled signal (RCC) to synchronize to the correct time broadcast by the National Institute of Standards and Technology (NIST) Radio Station WWVB, located near Fort Collins, Colorado. WWVB broadcasts the current time and date with split-second accuracy.

Please note: Signal reception is normally better at night and when the weather is clear. The atomic signal generally takes a few hours to synchronize, so it is important to manually set the time and date after powering on the clock.

Intelli-Time Technology

Clocks equipped with Intelli-Time technology store settings and instruct the time and date to set themselves after loss of power or changing batteries.

Set the Time, Date & Units

The clock will immediately begin searching for the atomic signal after batteries are installed. After the clock acquires the signal or completes its search (approximately 3 minutes), you may manually adjust the time, date and units.

Press and HOLD the "SET" button located on the back of the clock for 2-3 seconds, to enter SET MODE. Once in SET MODE the preference you are currently setting will blink on the clock.

To adjust the currently selected (flashing) item, press and release the "▲" or "▼" buttons (press and HOLD to fast adjust).

To save your adjustments, press and release the "SET" button to adjust the next preference. The preference set order is as follows:

TIME ZONE (PST MST CST EST AST HAST AKST)
ATOMIC CLOCK ON/OFF
DAYLIGHT SAVING TIME ON/OFF*
CLOCK HOUR
CLOCK MINUTE
CALENDAR YEAR
CALENDAR MONTH
CALENDAR DATE
TEMPERATURE SCALE (°F or °C)

You will automatically exit SET MODE if no buttons are pressed for 10 seconds. Enter SET MODE at any time by pressing the "SET" button.

*If you live in an area that observes daylight saving time, DST should be set to ON.

Placement for Maximum Accuracy

AcuRite sensors are sensitive to surrounding environmental conditions. Proper placement of both the clock and outdoor sensor are critical to the accuracy and performance of this product.



Clock Placement

Place clock in a dry area free of dirt and dust. To help ensure an accurate indoor temperature measurement, be sure to place the clock away from heat sources or vents.



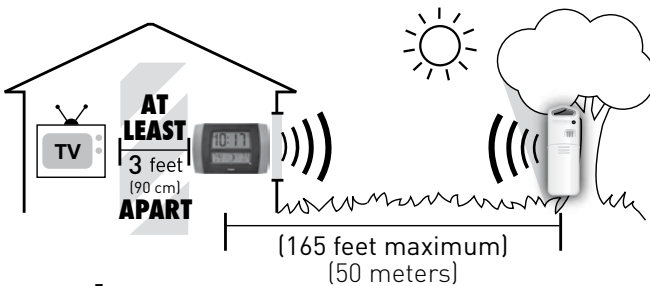
Outdoor Sensor Placement

Sensor must be placed outside to observe outdoor conditions. Sensor is water resistant and is designed for general outdoor use, however, to extend its life place the sensor in an area protected from direct weather elements.

Hang the sensor using the integrated hang holes or hanger, or by using string (not included) to hang it from a suitable location, like a well covered tree branch. The best location is 4 to 8 feet above the ground with permanent shade and plenty of fresh air to circulate around the sensor.

Important Placement Guidelines

- To ensure accurate temperature measurement, place units out of direct sunlight and away from any heat sources or vents.
- Clock and outdoor sensor must be within 165 ft (50 m) of each other.
- To maximize wireless range, place units away from large metallic items, thick walls, metal surfaces, or other objects that may limit wireless communication.
- To prevent wireless interference, place both units at least 3 ft (90 cm) away from electronic devices (TV, computer, microwave, radio, etc.).



Setup is Complete

The sensor will now synchronize with the clock. It may take a few minutes for synchronization to complete.

Using the Clock

Backlight Settings

This clock features an Indiglo® backlight that automatically detects low lighting and illuminates the display in the dark. To select your backlight brightness preference, use the Backlight Switch, located on the back of the clock, to select between: HIGH, LOW, or OFF.

To conserve battery power or prevent the backlight from turning on, you may choose the LOW or OFF setting for the backlight. The chart below displays estimated battery life based on your backlight settings.

Backlight Setting	Battery Life
Backlight OFF	Approximately 3 years
LOW Backlight ON for 8 hours	Approximately 1 year
LOW Backlight ON for 24 hours	Approximately 3 months
HIGH Backlight ON for 8 hours	Approximately 6 months
HIGH Backlight ON for 24 hours	Approximately 1 month

Note: The backlight MAY turn off at 2:00 AM and 3:00 AM to acquire the atomic clock (RCC) signal.

Moon Phase

Track the phases of the moon, conveyed through simple lunar phase icons.




NEW

WAXING
CRESCENT1ST
QUARTERWAXING
GIBBOUS

FULL

WANING
GIBBOUS3RD
QUARTERWANING
CRESCENT

Troubleshooting

<p>No outdoor sensor reception</p> 	<p>If the wireless signal indicator shows no bars:</p> <ul style="list-style-type: none"> • Relocate the clock and/or the outdoor sensor. The units must be within 165 ft (50 m) of each other. • Make sure both units are placed at least 3 feet (90 cm) away from electronics that may interfere with the wireless communication (such as TVs, microwaves, computers, etc). • Use standard alkaline batteries (or lithium batteries in sensor when temperature is below -4°F/-20°C). Do not use heavy duty or rechargeable batteries. NOTE: It may take up to 20 minutes for clock and sensor to synchronize after batteries are replaced.
<p>Clock is too dark, hard to read or doesn't work</p>	<ul style="list-style-type: none"> • The backlight may automatically turn off for 10 minutes at 2:00am and 3:00am to acquire the atomic clock signal. • Check that the batteries are installed correctly. Batteries may need to be replaced. • Increase brightness using backlight switch, located on the back of the clock. • Press the RESET button located in the battery compartment of the clock. • The optimum viewing angle for this product is from slightly above it.
<p>Inaccurate temperature</p>	<ul style="list-style-type: none"> • Make sure both the clock and sensor are placed out of direct sunlight and away from any heat sources or vents (see page 6).
<p>Outdoor temperature is flashing or showing dashes</p>	<p>Flashing of the outdoor temperature is generally an indication of wireless interference.</p> <ol style="list-style-type: none"> 1. Bring both the sensor and clock indoors, side by side and remove batteries from each. 2. Make sure the A-B-C switch on both units match. 3. Reinstall batteries in outdoor sensor. 4. Reinstall batteries in clock. 5. Let the units sit within a couple feet of each other for about 20 minutes to gain a strong connection.
<p>The unit lost power or batteries were changed and the time is not correct</p>	<ul style="list-style-type: none"> • The Intelli-Time battery needs to be replaced (see page 9). Once the new battery is installed, time and date will need to be set manually.
<p>Atomic signal or time syncing problems</p>	<p>For additional troubleshooting, please visit: http://www.nist.gov/pml/div688/grp40/radioclocks.cfm</p>

If your AcuRite product does not operate properly after trying the troubleshooting steps, visit www.AcuRite.com or call (877) 221-1252 for assistance.

Care & Maintenance

Clock Care

Clean with a soft, damp cloth. Do not use caustic cleaners or abrasives. Keep away from dust, dirt and moisture. Clean ventilation ports regularly with a gentle puff of air.

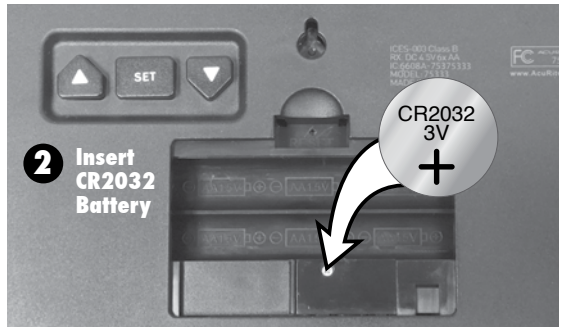
Outdoor Sensor Care

Clean with a soft damp cloth. Do not use caustic cleaners or abrasives.

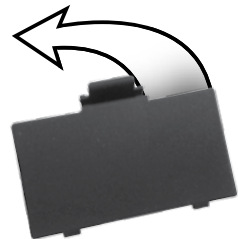
Replace Intelli-Time Clock Battery

Intelli-Time technology is powered by a pre-installed coin-cell battery that stores the time and date settings. The battery has a shelf life of several years. Time and date will need to be entered after replacing Intelli-Time battery. To replace the Intelli-Time battery:

1. Locate the coin cell battery compartment door in the battery compartment of the clock. Unscrew and remove the compartment cover.
2. Insert 1 x CR2032 coin cell battery into the battery compartment, as shown. Install battery with "+" positive terminal facing OUT.
3. Screw in the battery cover.



- 1 Remove Battery Cover



Specifications

TEMPERATURE RANGE	Outdoor: -40°F to 158°F; -40°C to 70°C
	Indoor: 32°F to 122°F; 0°C to 50°C
WIRELESS RANGE	165 ft / 50 m depending on home construction materials
OPERATING FREQUENCY	433 MHz
POWER	Clock: 6 x AA alkaline batteries
	Sensor: 2 x AA alkaline or lithium batteries
DATA REPORTING	Outdoor data: 30 second updates
	Indoor data: 60 second updates

FCC Information

This device complies with part 15 of FCC rules. Operation is subject to the following two conditions:

1- This device may NOT cause harmful interference, and

2- This device must accept any interference received, including interference that may cause undesired operation.

WARNING: Changes or modifications to this unit not expressly approved by the party responsible for compliance could void the user's authority to operate the equipment.

NOTE: This equipment has been tested and found to comply with the limits for a Class B digital device, pursuant to Part 15 of the FCC rules. These limits are designed to provide reasonable protection against harmful interference in a residential installation. This equipment generates, uses and can radiate radio frequency energy and, if not installed and used in accordance with the instructions, may cause harmful interference to radio communications. However, There is no guarantee that interference will not occur in a particular installation. If this equipment does cause harmful interference to radio or television reception, which can be determined by turning the equipment off and on, the user is encouraged to try to correct the interference by one or more of the following measures:

- Reorient or relocate the receiving antenna.
- Increase the separation between the equipment and the receiver.
- Connect the equipment into an outlet on a circuit different from that to which the receiver is connected.
- Consult the dealer or an experienced radio/TV technician for help.

NOTE: The manufacturer is not responsible for any radio or TV interference caused by unauthorized modifications to this equipment.

Such modifications could void the user authority to operate the equipment.

This device complies with Industry Canada licence-exempt RSS standard(s).

Operation is subject to the following two conditions:

(1) This device may not cause interference, and

(2) This device must accept any interference received, including interference that may cause undesired operation of the device.

Customer Support

AcuRite customer support is committed to providing you with best-in-class service. **For assistance**, please have the model number of this product available and contact us in any of the following ways:



(877) 221-1252



info@chaney-inst.com

24/7 support at www.AcuRite.com

- ▶ Installation Videos
- ▶ Register your Product
- ▶ Instruction Manuals
- ▶ Support User Forum
- ▶ Replacement Parts
- ▶ Submit Feedback & Ideas

IMPORTANT

PRODUCT MUST BE REGISTERED
TO RECEIVE WARRANTY SERVICE

PRODUCT REGISTRATION

Register online
to receive 1 year
warranty protection

www.AcuRite.com

SHOP NOW

SUPPORT

Support Forum

Archived Products

▶ Register a Product

Limited One Year Warranty

At AcuRite, we proudly uphold our commitment to quality technology. Chaney Instrument Co. warrants that all products it manufactures to be of good material and workmanship, and to be free of defects when properly installed and operated for a period of one year from the date of purchase.

We recommend that you visit us at www.AcuRite.com for the fastest way to register your product. However, product registration does not eliminate the need to retain your original proof of purchase in order to obtain warranty benefits.

Chaney Instrument Co. warrants that all products it manufactures to be of good material and workmanship, and to be free of defects when properly installed and operated for a period of one year from the date of purchase. Remedy for breach of this warranty is limited to repair or replacement of the defective item(s). Any product which, under normal use and service, is proven to breach the warranty contained herein within ONE YEAR from date of sale will, upon examination by Chaney, and at its sole option, be repaired or replaced by Chaney. Transportation costs and charges for returned goods shall be paid for by the purchaser. Chaney hereby disclaims all responsibility for such transportation costs and charges. This

warranty will not be breached, and Chaney will give no credit for products it manufactures which have received normal wear and tear, been damaged (including by acts of nature), tampered, abused, improperly installed, damaged in shipping, or repaired or altered by others than authorized representatives of Chaney.

The above-described warranty is expressly in lieu of all other warranties, express or implied, and all other warranties are hereby expressly disclaimed, including without limitation the implied warranty of merchantability and the implied warranty of fitness for a particular purpose. Chaney expressly disclaims all liability for special, consequential or incidental damages, whether arising in tort or by contract from any breach of this warranty. Some states do not allow the exclusion or limitation of incidental or consequential damages, so the above limitation or exclusion may not apply to you. Chaney further disclaims all liability from personal injury relating to its products to the extent permitted by law. By acceptance of any of Chaney's products, the purchaser assumes all liability for the consequences arising from their use or misuse. No person, firm or corporation is authorized to assume for Chaney any other liability in connection with the sale of its products. Furthermore, no person, firm or corporation is authorized to modify or waive the terms of this paragraph, and the preceding paragraph, unless done in writing and signed by a duly authorized agent of Chaney. This warranty gives you specific legal rights, and you may also have other rights which vary from state to state.

For in-warranty claims: Chaney Instrument Co.
965 Wells St., Lake Geneva, WI 53147

ACU>RITE®



Weather
Stations



Temperature
& Humidity



Weather
Alert Radio



Kitchen
Thermometers
& Timers



Clocks

It's more than accurate, it's ACU>RITE.

AcuRite offers an extensive assortment of precision instruments, designed to provide you with information you can depend on to Plan your day with confidence™.

www.AcuRite.com