

Window Thermometer

models 00305 / 00305SBDI / 00305SBDIA1 /
00306 / 00423



CONTENTS

| | | | |
|------------------------------|---|----------------------------|---|
| Unpacking Instructions | 2 | Replace Battery | 4 |
| Package Contents | 2 | Using the Thermometer..... | 4 |
| Product Registration | 2 | Care & Maintenance..... | 4 |
| Features & Benefits..... | 3 | Specifications..... | 5 |
| Setup | 3 | Customer Support | 5 |
| Placement Guidelines | 3 | Warranty..... | 6 |

Questions? Contact Customer Support at
(877) 221-1252 or visit www.AcuRite.com.

SAVE THIS MANUAL FOR FUTURE REFERENCE.

ACURITE®

Congratulations on your new AcuRite product. To ensure the best possible product performance, please read this manual in its entirety and retain it for future reference.

Unpacking Instructions

Remove the protective film that is applied to the LCD screen prior to using this product. Locate the tab and peel off to remove.

Package Contents

1. Thermometer
2. Battery (pre-installed)
3. Instruction Manual

IMPORTANT

PRODUCT MUST BE REGISTERED
TO RECEIVE WARRANTY SERVICE

PRODUCT REGISTRATION

Register online
to receive 1 year
warranty protection

www.AcuRite.com

SHOP NOW

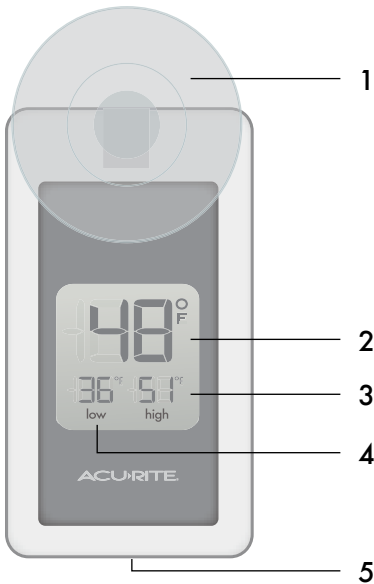
SUPPORT

Support Forum

Archived Products

▶ Register a Product

Features & Benefits



1. Suction Cup Mount

Rotates for versatile placement and indoor or outdoor use.

2. Current Outdoor Temperature

3. High Temperature Record

Highest temperature recorded over the past 24 hours

4. Low Temperature Record

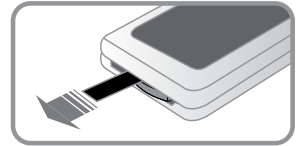
Lowest temperature recorded over the past 24 hours

5. Battery Compartment Access

SETUP

Activate Thermometer

To activate the pre-installed battery pull out the plastic tab at the base of the thermometer. Note: The temperature may read higher than the actual temperature at first due to body heat from handling.



Placement for Maximum Accuracy

AcuRite products are sensitive to surrounding environmental conditions. Proper placement of the thermometer is critical to the accuracy and performance of this product. To ensure accurate temperature measurement, place unit out of direct sunlight and away from any heat sources.

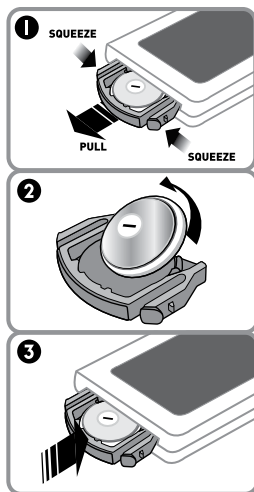
Mounting the Thermometer

This product is water resistant and designed for general outdoor use, however, to extend its life place it in an area protected from direct weather elements.

Clean the area where the suction cup will be adhered with a household cleaner. Be sure surface is free of oil, grease, dust or other matter. Moisten the suction cup. To mount, push firmly on the thermometer, pressing it against the mounting surface to form a strong suction. For best suction, select surface that is hard, smooth and non-porous. Do not use suction cup on wood or plaster.

Replace the Battery

1. Gently squeeze the tabs at the base of the thermometer and pull out the battery compartment drawer.
2. Remove and safely discard the old battery. Insert a new CR-2032 lithium button cell battery. Follow the polarity diagram in the battery compartment.
3. Gently push the battery compartment drawer back into the thermometer.



WARNING: THIS PRODUCT CONTAINS A BUTTON-CELL BATTERY. IF SWALLOWED, IT COULD CAUSE SEVERE INJURY OR DEATH IN JUST 2 HOURS. SEEK MEDICAL ATTENTION IMMEDIATELY IF INGESTED.



PLEASE DISPOSE OF OLD OR DEFECTIVE BATTERIES IN AN ENVIRONMENTALLY SAFE WAY AND IN ACCORDANCE WITH YOUR LOCAL LAWS AND REGULATIONS.

BATTERY SAFETY: Follow the polarity (+/-) diagram in the battery compartment. Promptly remove dead batteries from the device. Dispose of used batteries properly. Only batteries of the same or equivalent type as recommended are to be used. DO NOT incinerate used batteries. DO NOT dispose of batteries in fire, as batteries may explode or leak. DO NOT mix old and new batteries or types of batteries (alkaline/standard). DO NOT use rechargeable batteries. DO NOT recharge non-rechargeable batteries. DO NOT short-circuit the supply terminals.

OPERATION

Using the Thermometer

High/Low Records

The "HIGH" and "LOW" temperature records are automatically cleared every 24 hours. The time records clear each day is determined by the time the battery was installed. For example, if the battery was installed at 6:00 pm, then high/low records will reset at 6:00 pm daily.

Care & Maintenance

Clean with a soft, damp cloth. Do not use caustic cleaners or abrasives.

Specifications

| | |
|-------------------|-------------------|
| TEMPERATURE RANGE | -4°F to 158°F |
| POWER | 1 CR-2032 Battery |

FCC Information

This device complies with part 15 of FCC rules. Operation is subject to the following two conditions:

1- This device may NOT cause harmful interference

2- This device must accept any interference received, including interference that may cause undesired operation.

WARNING: Changes or modifications to this unit not expressly approved by the party responsible for compliance could void the user's authority to operate the equipment.

Customer Support

AcuRite customer support is committed to providing you with best-in-class service. **For assistance**, please have the model number of this product available and contact us in any of the following ways:



(877) 221-1252



info@chaney-inst.com

24/7 support at www.AcuRite.com

- ▶ Installation Videos
- ▶ Register your Product
- ▶ Instruction Manuals
- ▶ Support User Forum
- ▶ Replacement Parts
- ▶ Submit Feedback & Ideas

IMPORTANT

PRODUCT MUST BE REGISTERED
TO RECEIVE WARRANTY SERVICE

PRODUCT REGISTRATION

Register online
to receive 1 year
warranty protection

www.AcuRite.com

SUPPORT

Support Forum

Archived Products

▶ Register a Product

Limited One Year Warranty

At AcuRite, we proudly uphold our commitment to quality technology. Chaney Instrument Co. warrants that all products it manufactures to be of good material and workmanship, and to be free of defects when properly installed and operated for a period of one year from the date of purchase.

We recommend that you visit us at www.AcuRite.com for the fastest way to register your product. However, product registration does not eliminate the need to retain your original proof of purchase in order to obtain warranty benefits.

Chaney Instrument Co. warrants that all products it manufactures to be of good material and workmanship, and to be free of defects when properly installed and operated for a period of one year from the date of purchase. Remedy for breach of this warranty is limited to repair or replacement of the defective item(s). Any product which, under normal use and service, is proven to breach the warranty contained herein within ONE YEAR from date of sale will, upon examination by Chaney, and at its sole option, be repaired or replaced by Chaney. Transportation costs and charges for returned goods shall be paid for by the purchaser. Chaney hereby disclaims all responsibility for such transportation costs and charges. This

warranty will not be breached, and Chaney will give no credit for products it manufactures which have received normal wear and tear, been damaged (including by acts of nature), tampered, abused, improperly installed, damaged in shipping, or repaired or altered by others than authorized representatives of Chaney.

The above-described warranty is expressly in lieu of all other warranties, express or implied, and all other warranties are hereby expressly disclaimed, including without limitation the implied warranty of merchantability and the implied warranty of fitness for a particular purpose. Chaney expressly disclaims all liability for special, consequential or incidental damages, whether arising in tort or by contract from any breach of this warranty. Some states do not allow the exclusion or limitation of incidental or consequential damages, so the above limitation or exclusion may not apply to you. Chaney further disclaims all liability from personal injury relating to its products to the extent permitted by law. By acceptance of any of Chaney's products, the purchaser assumes all liability for the consequences arising from their use or misuse. No person, firm or corporation is authorized to assume for Chaney any other liability in connection with the sale of its products. Furthermore, no person, firm or corporation is authorized to modify or waive the terms of this paragraph, and the preceding paragraph, unless done in writing and signed by a duly authorized agent of Chaney. This warranty gives you specific legal rights, and you may also have other rights which vary from state to state.

For in-warranty claims: Chaney Instrument Co.
965 Wells St., Lake Geneva, WI 53147

ACU>RITE®



Weather
Stations



Temperature
& Humidity



Weather
Alert Radio



Kitchen
Thermometers
& Timers



Clocks

It's more than accurate, it's ACU>RITE.

AcuRite offers an extensive assortment of precision instruments, designed to provide you with information you can depend on to Plan your day with confidence™.

www.AcuRite.com

©Chaney Instrument Co. All rights reserved. AcuRite is a registered trademark of the Chaney Instrument Co., Lake Geneva, WI 53147. All other trademarks and copyrights are the property of their respective owners. AcuRite uses patented technology. Visit www.AcuRite.com/patents for details.

Printed in China
00423 INST 042115